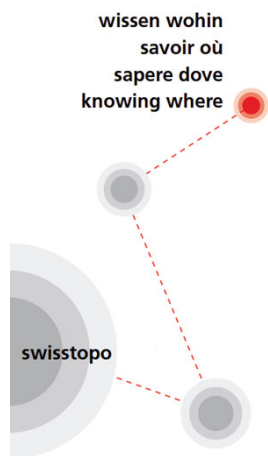




Schweizerische Eidgenossenschaft
Confédération suisse
Confederazione Svizzera
Confederaziun svizra

Federal Office of Topography swisstopo



Digital Twins –

A Potential Platform for Providing Geospatial Information Intelligence and Smart Services

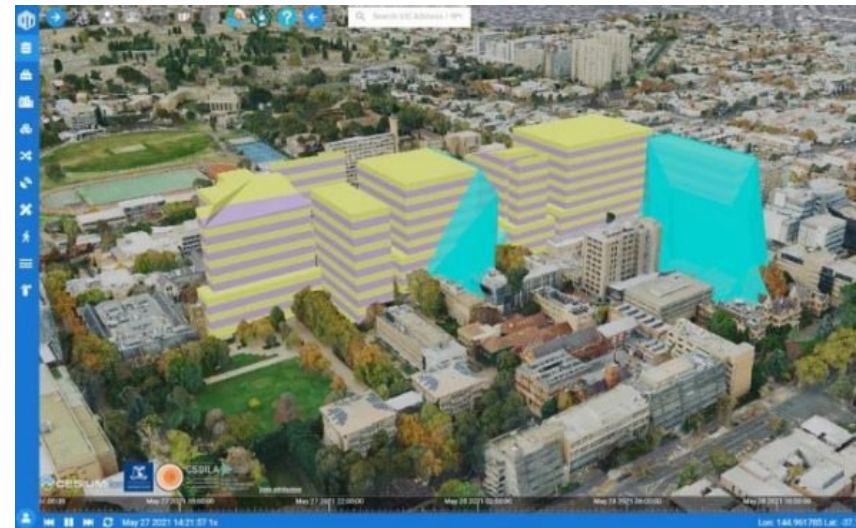
swisstopo colloquium, 2 Dec. 2022

Moderator: Daniel Steudler



Digital Twin (DT)

- A DT is a virtual representation of real-world entities and processes, synchronized at a specified frequency and fidelity (Digital Twins consortium)
- DTs use real-time and historic data to represent the past and present, and to simulate predicted futures





Centre for Spatial Data Infrastructures and Land Administration (CSDILA)

- a research centre within the Faculty of Engineering and Information Technology at the University of Melbourne, Australia
- celebrated its 20-year anniversary in 2021



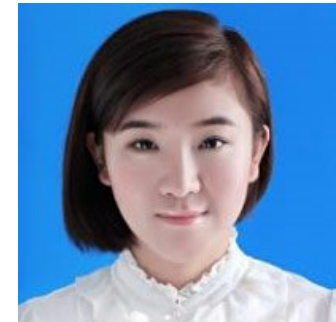
Prof Dr Abbas Rajabifard
Centre Director



Dr Soheil Sabri
Senior Research Fellow



Dr Benny (Yiqun) Chen
Senior Research Fellow



Yuke Xie
System Developer



Program

Role of Digital Twins within the "Strategy Geoinformation Switzerland"

Dr Christine Najar, Swiss Federal Office of Topography swisstopo



Private Sector Perspective on Digital Twins in Switzerland

Dr Jürg Lüthy, Acht Grad Ost



A Potential Platform for Providing Geospatial Information Intelligence and Smart Services

Prof Dr Abbas Rajabifard, Dr Soheil Sabri,
Dr Benny (Yiqun) Chen, Yuke Xie



Questions & Answers





Thank you for your attention!

Contact details:

Abbas Rajabifard <abbas.r@unimelb.edu.au>

Soheil Sabri <soheil.sabri@unimelb.edu.au>

Benny Chen <yiqun.c@unimelb.edu.au>

Jürg Lüthy <juerg.luethy@achtgradost.ch>

Najar Christine swisstopo christine.najar@swisstopo.ch

Daniel Steudler <daniel.steudler@swisstopo.ch>

Nächste Kolloquien:

www.swisstopo.ch → Über swisstopo → Veranstaltungen